

Historic Hawaii Trail Route: Hilo

February 2023

The information contained in this packet was developed based upon the Hawaii Heritage Trail Questionnaire for Hilo found on the Internet. The Hawaii Heritage Trail patch is not advertised by Aloha Council on their website (at this time), so be sure to contact Aloha Council to ensure that the patch is still available prior to conducting this hike.

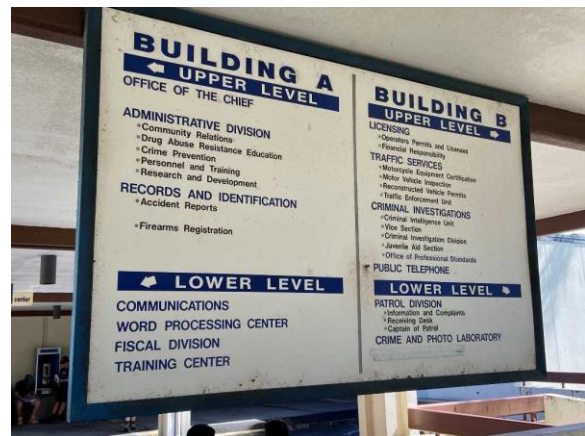
The hike begins at the Hawaii County Police Department and ends on Banyan Drive, covering a hiking distance of ____ miles.

Parking is available along Kamehameha Avenue in downtown Hilo, fronting the stores facing Hilo Bay.



1. Hawai'i Police Department

- Website: <https://www.hawaiipolice.com/>
- The headquarters of the County of Hawai'i, Hawai'i Police Department, is located at 349 Kapiolani Street in Hilo, Hawai'i. The Office of the Chief is located on the Upper Level (or Second Floor) of Building A.



2. East Hawai'i Veteran's Cemetery, County of Hawai'i

- Website: <https://dod.hawaii.gov/ovs/veteran-cemeteries/>
- The East Hawai'i Veteran's Cemetery, No. 1, is located at 150 Kapiolani Street and is the final resting place for veterans of World War I, World War II, the Korean War, and the Vietnam War. The Cemetery is adjacent to East Hawai'i Veteran's Cemetery, No. 2, the entrance of which is located at 110 Laimana Avenue. Both Cemeteries are managed by the Hawai'i Department of Defense, Office of Veterans' Services, while the cemetery grounds are maintained by the County of Hawai'i, Department of Parks and Recreations. There are no staff located on-site.



3. Haili Congregational Church

- Website: <https://hailichurch.org/>
- The Waiakea Mission Station, better known as the Haili Congregational Church, is a wood frame building of double-wall construction measuring 50 x 75 feet with a simple corrugated metal gable roof and a square central tower at the north end of the building. The building is constructed in a simplified interpretation of the Greek Revival style. The Haili church is significant as an intact example of an early missionary church in Hawaii. In terms of architecture, the building is comparable to contemporary New England churches and meeting houses.

The working of God can be documented in the early history of Haili Congregational Church. First, God used the zeal of Henry Opukahaia, the first Hawaiian convert to Christianity, to inspire New England missionaries to bring the Gospel of Jesus Christ to his native land. Secondly, six months prior to the arrival of the first missionaries at Kailua-Kona King Kamehameha II (Liholiho) broke the kapu system of pagan worship. Thirdly, with the spiritual vacuum created by the loss of the kapu system, the response to the Gospel was tremendous on the eastern side of the Big Island, especially through the preaching of Rev. Titus Coan, one of the missionaries of the early Hilo Mission.



4. **St. Joseph Catholic Church**

- Website: <https://stjoehilo.com/>
- Catholic Christian worship in Hilo was as early as 1839. The first chapel located on bayfront was made from pili grass and was called Saint Martin de Tours. Father Charles Pouzot, SCC became the first pastor of the parish in 1845. By 1848 the small grass chapel was replaced by a new wooden structure. The Tabernacle to preserve the Eucharist was placed in the sanctuary in 1849. Gradually the worship space was adorned with statues and stations of the cross. A bell donated in 1850, was a gift from sailors serving on the American man-of-war Independence. In 1852 the chapel was enlarged due to the generosity of sailors from another American warship whose spiritual needs had also been served in Hilo.

In 1862 the parish of St. Martin de Tours had once again outgrown its place of worship. A new larger church was built in the area of Kalakaua Park on Keawe and Wainuenue Avenue. Using stones and rocks which had been collected from the royal lands near the Wailuku River, the new larger, twin towered church was able to accommodate the rapidly growing number of communicants. On July 9, 1862 Bishop Louis Maigret, Bishop of Honolulu dedicated the new church to Saint Joseph. That same day 30 more people were baptized and about 300 more were confirmed to become full members of the Saint Joseph Catholic Community.

In the 1880's an increase in the number of Portuguese immigrants from the Madeira Islands more than doubled the Catholic Christian population in Hilo. Father Puozot already fluent in English, French and Hawaiian, learned Portuguese and began to preach his sermons in Portuguese as well as in English and Hawaiian. From that time to the present the Portuguese have been the backbone of the Catholic Church in Hawaii.

Fr. Pouzot continued to serve the needs of Saint Joseph parish until his death in 1895 at the age of 76. Fr. Puozot is buried in the St. Joseph cemetery among the people he loved and served during his 50 years in Hilo.

Fr. James C. Bessell, SSCC was assigned as pastor at Saint Joseph in 1909. The twin towered church had recently been renovated. Father's zealous effort to reach many families resulted in increasing devotional opportunities and an increase in the numbers of parishioners. His enthusiasm was contagious. Through his efforts and the community spirit of the people, there soon grew a need for a new, larger church. Father Beissell purchased the property on the corner of Kapiolani and Haili Streets from the First Hawaiian Company in 1915. The large community of

active faithful including, among others, Hawaiian and Portuguese families worked together to build their new church.

The cornerstone was laid in 1917 and the church was dedicated at its present location in February 1919. One needs only to read the names engraved below the statues and stained glass windows to observe the generosity of those builders of the present church.



5. Mission House

- Website: <https://lymanmuseum.org/>
- In 1832, missionaries David and Sarah Lyman traveled by ship from New England to Hawai'i after being married for all of 24 days before leaving on the six-month voyage. In the late 1830s they built the Lyman House as a family home. The Hilo Boarding School, a school for young Hawaiian men founded by the Lymans, was built nearby. Over the years, the house became a place to raise their seven children and host guests, including many of the Hawaiian ali'i (royalty) and other notables such as Mark Twain and Isabella Bird. The Lymans never returned to their native New England, but lived out their long lives in Hilo.

The Lyman Mission House is the oldest standing wood structure on the Island of Hawai'i and one of the oldest in the State. It features furniture, tools, household items, and artifacts used by the Lymans and other early missionary families. The house is on the State and National Registers of Historic Places and is an important artifact of the Lyman Museum.



6. Hilo United Methodist Church

- Website: <http://www.hiloumc.org/>
- The Hilo United Methodist church was founded more than a hundred years ago in Hilo, Hawai'i as a mission church for Korean plantation workers. Since the 1940s the Church has been a multi-cultural church serving the local community. The Church has a Senior Pastor and an Associate Pastor, along with staff consisting of an office administrator, custodian, bookkeeper, organist and pianist.

The Reverend Cho Wan See, a missionary from Korea, oversaw the ministry among Koreans on the Big Island. Much of the activity centered around the 'Ōla'a Plantation, and by 1910 the Hilo Korean Methodist Church had been established. Religion provided Korean Americans important spaces to gather together, to punctuate the workweek, and to affirm the humanity of its practitioners. According to one study, within a few years of their arrival, Koreans organized thirty-six makeshift churches. One estimate suggests that Christians accounted for more than two-thirds of the first wave of Korean immigrants.

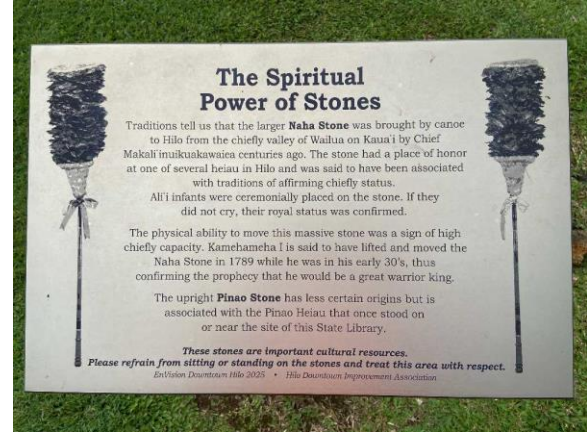


7. Hilo Public (State) Library

- Website: <https://www.librarieshawaii.org/branch/hilo-public-library/>
- The Spiritual Power of Stones: Traditions tell us that the larger Naha Stone was brought by canoe to Hilo from the chiefly valley of Wailua on Kaua'i by Chief Makali'inuikuakawaiea centuries ago. The stone had a place of honor at one of several heiau in Hilo and was said to have been associated with traditions of affirming chiefly status. Ali'i infants were ceremonially placed on the stone. If they did not cry, their royal status was confirmed.

The physical ability to move this massive stone was a sign of high chiefly capacity. Kamehameha I is said to have lifted and moved the Naha Stone in 1789 while he was in his early 30's, thus confirming the prophecy that he would be a great warrior king.

The upright Pinao Stone has less certain origins but is associated with the Pinao Heiau that once stood on or near the site of this State Library.



8. Federal Building

- Website: <https://www.gsa.gov/about-us/regions/welcome-to-the-pacific-rim-region-9/buildings-and-facilities/hawaii/hilo-federal-building-us-post-office-and-courthouse>
- The Federal Building, U.S. Post Office and Courthouse in Hilo, Hawaii is a former courthouse of the United States District Court for the District of Hawaii. Completed in 1917 and expanded in the 1930s, the building was listed in the National Register of Historic Places in 1974.

When the Hawaiian Islands became a territory of the United States in 1900, officials wanted to expand postal and court facilities for the second-largest city in the territory. By 1913, the Hilo Board of Trade and the territory's governmental representative secured \$200,000 for a federal building.

New York architect Henry Whitfield designed the new building in 1915. Whitfield, who was the brother-in-law of Andrew Carnegie, had just completed the design for the Honolulu Carnegie Library. Whitfield designed the building in the Mediterranean Renaissance Revival style, which blends traditional classical architecture with features more suited to a tropical climate. The building was one of the first in Hawai'i constructed using reinforced concrete, a technology that was common on the mainland. Construction was completed and the building occupied in 1917. It originally functioned as a courthouse, post office, and custom house. Other tenants included the Immigration Bureau, Agricultural Extension Service, Weather Bureau, and Internal Revenue Service.

By the 1930s, tenants required more space and two wings were added to the building between 1936 and 1938. Louis A. Simon, supervising architect of the US Treasury, designed the wings in a style compatible with that of the original building. The building was added to the National Register of Historic Places listings on the island of Hawaii on October 1, 1974 as site 74000708. In 1978, most postal functions moved to a new location, and the following year the Third Circuit Court vacated the third floor, which was converted into offices. Current major tenants are the U.S. Post Office, U.S. Department of Agriculture, and Veterans Affairs.



9. Shipman Street

- Website: https://en.wikipedia.org/wiki/William_Herbert_Shipman
- Shipman is named after William Herbert Shipman (1854–1943), who was a Hawaiian and American businessman on the island of Hawai‘i. One estate of his family was used to preserve the nēnē, an endangered species of Hawaiian goose. A historic house associated with his family for over a hundred years is called the W. H. Shipman House in Hilo, Hawaii. Another of his historic estates called the Ainahou Ranch, built in 1941 as a refuge from World War II, is preserved within Hawaii Volcanoes National Park.

On the sidewalk along Shipman Street (and other areas in Hilo), you can find embedded steel hoops, or hitching rings, that were used in the 1800s to the early 1900s to tie a horse on the side of the road.



10. Hilo Bay Breakwater

- Website: <http://wesisland.blogspot.com/2009/09/blog-20-hilo-harbor-breakwater.html>
- The United States entered into a contract on June 12, 1908, for constructing the breakwater at Hilo Harbor. The specifications called for a jetty of the rubble mound type (rubble-mound breakwaters are the largest and most substantial of various breakwater types and are used almost exclusively in offshore and major coastal harbor protection schemes.) Many stones in the slope walls were required to weigh more than two tons each. Across the top and down the sea side slope, to a point three feet under low water, the stones needed to weigh over eight tons each.

The required weight for the stones sent the contractor nearly thirty miles to Puna, on the east point of the island, to open a quarry. While the whole island is virtually built of flows of lava rock, and the breakwater itself rests on a reef of it, there are comparatively few places on the slopes of Mauna Loa where rock of this weight could be found in large quantities. Nearly four miles of railroad had to be graded and built across lava flows in order to make connections with the tracks of the Hilo Railroad Company over which the stones were hauled.

The breakwater was completed in three sections respectively in 1910, 1911 and 1929. The third section extended the breakwater to its present length of about 2 miles. After dredging a deepwater channel in 1914 and from 1925-1930, the Hilo Harbor took roughly its present form. In the 21 years of its construction the breakwater ended up using over 950,000 tons of rock -- truly a feat of engineering and worthy of our esteem for all involved.



11. Pacific Tsunami Museum

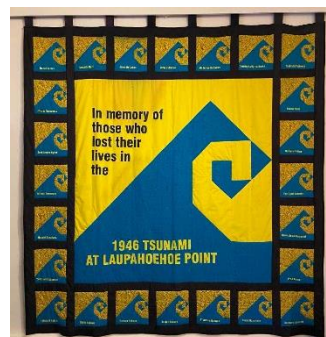
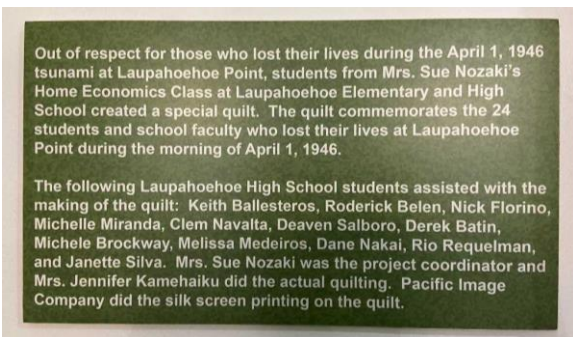
- Website: <http://tsunami.org/>
- The Pacific Tsunami Museum (PTM) was co-founded by Dr. Walter Dudley and Jeanne Branch Johnston. In 1988, Dr. Dudley published the first edition of the book *Tsunami!* wherein he made a request of the community for survivor stories. In 1993, a tsunami survivor by the name of Jeanne Branch Johnston saw the need for a tsunami museum in Hilo. As Jeanne probed the idea of starting a museum, she found others to be very responsive, and a steering committee was formed. Originally called the "Hilo Tsunami Museum", the name was changed later to the "Pacific Tsunami Museum" (PTM).

On May 22, 1997, First Hawaiian Bank donated its Kamehameha Branch building in downtown Hilo as a permanent site for the PTM. Bank Chairman and Chief Executive Officer Walter A. Dods, Jr. made the donation announcement on the front steps of the historic bank building. It was on the 37th anniversary of the day when warning sirens sounded for the May 23, 1960 tsunami that devastated Hilo. Stephen Yamashiro, Hawai'i Island Mayor at the time, and Jim Wilson, PTM Board President, were present at the ceremony. Other PTM board members, as well as scientific advisory council members, were present at this momentous occasion.

First Hawaiian Bank donated both the building and the land beneath it, then-appraised at \$800,000. The building, built by First Hawaiian Bank in 1930, was designed by the late C.W.

Dickey, Hawai'i's most prominent architect of the early 20th century. PTM took possession of the building in December 1997, opening its doors to the public in June 1998. The Museum continually expands its exhibits and content to capture both the human stories and scientific explanations of the tsunami events portrayed, in keeping with our mission to educate the public and save lives in the event of a tsunami.

The goals of the Pacific Tsunami Museum (PTM) are to promote public tsunami education for the people of Hawai'i and visitors worldwide, preserve the social and cultural history of Hawai'i, and serve as a living memorial to those who lost their lives in past tsunami events.



12. Kalakaua Park

- Website: <https://www.kaahelehawaii.com/kalakaua-park-hilos-original-town-square/>
- For over a century, Kalākaua Park has been Hilo's Town Square. The sundial donated to the people of Ka Lani Kāwika Kalākaua (King David Kalakaua), who dedicated the area as a park around 1877, remains to this day. Originally an undefined plot of land near the Wailuku River, one can imagine Hawaiian farmers from Hāla'i stopping to rest there, and observing the beauty of the bay, before heading toward the river mouth to trade.

The first recorded Euro-American use of the area was for the first Christian Mission, Waiākea Mission Station – Hilo Station, in 1825. Under the influence of the New England missionaries, it evolved into a tropical version of a New England town square. By the late 1800s, the area was the site of Hilo's first sheriff's office, courthouse, and other civic buildings. Kings and Queens visited the park, and local legend says that Kalākaua, himself, planted some of the trees.

After 1898, when Hawai'i became a territory of the United States, the US government needed a Federal office building in this second-largest city in the territory. The Federal Building was completed in 1917, and overlooks Kalākaua Park. Opposite the Federal Building, the former police station (now the East Hawai'i Cultural Center), and the Hawaiian Telephone Company buildings overlook the park. Mauka, or inland, of the park is Niolopa, the summer getaway for Hawaiian royalty. In the 20th century, it was redeveloped into the Hilo Hawaiian Hotel, which eventually succumbed to economic challenges.

In the 1930s, the park was re-dedicated in honor of the beloved king. Around that time, it also became the site of Hilo's first Lei Day festival. A beautiful pond and a marble monument honor those from Hawai'i Island who died in World War II, the Korean War, and Vietnam. A bronze statue, by Henry Bianchini, of Kalākaua in the middle of the park holds a taro leaf and *ipu heke* (gourd drum used in ancient-style chants). A time capsule was buried in 1991 during a total solar eclipse, to be opened in the next one to be visible from Hawai'i. Since its dedication, Kalākaua Park has been the site of celebrations and other events, and continues to provide space on its gracious lawn for an impressive calendar of community events ranging from art markets to hula shows, martial arts demonstrations to drum concerts, and the annual Shakespeare in the Park presentation of the Hilo Community Players.



13. S.H. Kress Building

- Website: <https://sah-archipedia.org/buildings/HI-01-HA30>
- S. H. Kress & Co. was the trading name of a chain of five and dime retail department stores in the United States established by Samuel Henry Kress. It operated from 1896 to 1981. In the first half of the 20th century, there were Kress stores with ornamented architecture in hundreds of cities and towns. One of the finest Art Deco buildings in Hawai'i, this three-story, polychrome, terra-cotta-clad building is an imposing presence on Kamehameha Avenue. The reinforced-concrete structure retains its bronze marquee with chromium name plates, and the original first-floor soda fountain remains intact. This store was the 228th Kress store built in the nation and the second in Hawaii following the introduction of the chain to Honolulu in 1931 (that building is demolished). The ell wing was added in 1954 and provided access from Kalakaua Street. Sibbert was a staff architect for S. H. Kress and Company from 1929 through 1954 and designed a number of distinctive Art Deco Kress stores in the United States.



14. Palace Theater

- Website: <https://hilopalace.com/>
- The Palace was built and opened in 1925 at the peak of the heyday for American movie palaces. It was originally part of a small family of theaters owned and operated by Adam C. Baker, a dashing Hawaiian gentleman who was the nephew of the last royal governors of the island of Hawai'i. Adam Baker had been involved in the theater business since the early 1900s and was a well-known showman in Hawai'i.

Compared to the frame movie theaters found in plantation communities, the Palace presented an air of urban sophistication. Its plaster facade and ornate second-story windows resonate its refinement. The neon Palace sign replaced the original in the 1930s; the Art Deco marquee dates from a remodeling in 1940. The plaster facade sheathes a still sturdy redwood frame. Inside, the three-tiered, 875-seat auditorium is the largest on the island. The Palace was the first building on the island of Hawaii to have central air-conditioning. The theater closed in 1981, and after a ten-year vacancy was purchased and slowly rejuvenated by Hilo Main Street.



15. Mo'ohau Park

- Website: <https://www.hmdb.org/m.asp?m=111233>
- Mo'ohau Park was established in the early 1900's as a place for community gatherings and youth activities. The first bandstand was dedicated near the current site in 1905. The land and the original bandstand were said to have been donated by Admiral George C. Beckley, a

descendant of Hawaiian royalty and associated with the Wilder Steamship Company.

The name "Mo'ōheau" was used by male descendants of the Hilo chief Ho'olulu, who helped to hide the bones of Kamehameha the Great following his death in 1819, Admiral Beckley and his son were known to use the name Mo'ōheau.

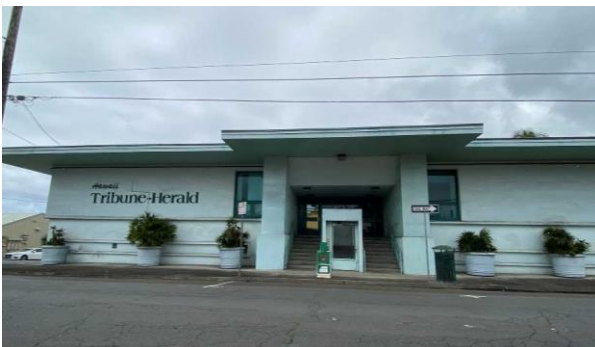
The current bandstand was destroyed several times by tsunami activity and rebuilt each time with similar roof and floor plans. Prior designs were two story and had "lady resting rooms" and "sport team facilities," or restrooms on the floor. Mo'ōheau Bandstand became the traditional home of the Hawai'i County Band which began in 1883. The bandstand has been the site of countless public events, music concerts, and celebrations of all sorts. Since the 1950's, the site has been a traditional statewide location for political gatherings and Democratic election eve rallies.

Mo'ōheau Park and Bandstand are maintained by the County of Hawai'i, Department of Parks and Recreation.



16. Hawai'i Tribune Herald

- Website: <https://www.hawaii-tribune-herald.com/>
- Hawaii Tribune-Herald is a daily broadsheet newspaper distributed on the Hilo-area of Hawai'i's Big Island. The newspaper is the primary news source for Hilo residents and locals. Circulation is 16,000 Monday through Friday and 18,000 on Sunday. Hawaii Tribune-Herald is owned and operated by Oahu Publications, Inc.



17. Hilo Central Fire Station

- Website: www.countyoffice.org/hawaii-county-fire-department-station-1-central-hilo-hi-44c/
- Located at 466 Kinoole Street in Hilo, the Hawaii County Fire Department Station 1 - Central provides fire protection and emergency response services to the Hilo community. The Fire Department's mission is to prevent the loss of life and property. In addition to responding to fires, the Hawaii County Fire Department Station 1 - Central also responds to medical emergencies, motor vehicle accidents, rescue calls, and incidents involving hazardous materials.



18. Hilo Hongwanji Mission

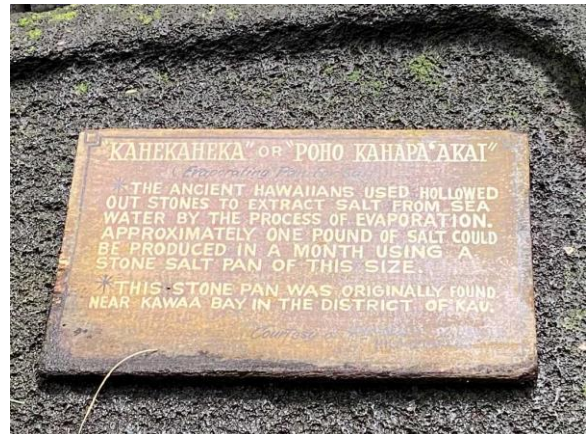
- Website: www.hilobetsuin.org
- The first Buddhist temple ever built in the Hawaiian Islands was erected in Hilo, Hawaii about 130 years ago. That temple, the Honpa Hongwanji Hilo Betsuin, originally built on land now known as Mo'ohaeu Park, is currently located on about four acres at 398 Kilauea Avenue in Hilo. The temple today is considered a major Hilo landmark and social hub. Today the temple serves about 500 family members and has fed thousands of hungry and needy over the years. In addition, Honpa Hongwanji Hilo Betsuin contributes thousands of dollars throughout the year to help people recover from natural disasters locally and internationally.

When it was first erected, the temple was a place to practice the Jodo Shinshu religion while filling the Japanese cultural void experienced by the original Japanese immigrants. Throughout history, the temple's mission and vision has remained: to adore the compassion of Amida Buddha, share the Jodo Shinshu teaching and realize the Sangha (community of the faithful) by gratefully rendering loving service to others.



19. County of Hawai'i Office Building

- Website: <https://sah-archipedia.org/buildings/HI-01-HA27>
- The Hawaii County Building stands with the State Capitol as the best example of regional design applied to government buildings in Hawai'i during the modern period. Its central atrium, almost a football field long, bristling green with Macarthur palms and white-flowered spathiphyllums, integrates indoors and outdoors while providing the protection necessary for office operations. Black lava-rock end walls combine with brown cast-stone, white concrete, metal, glass, and a copper pent roof to provide a multiplicity of textures and colors. The lava-rock walls recall the volcanic nature of the island of Hawaii, and the roof evokes the high-pitched roofs of earlier native Hawaiian buildings. The atrium's thirty-two-foot-high, poured-in-place reinforced-concrete columns provide strong vertical elements to a horizontally disposed space while supporting the skylit roof. Their unique canopy capitals contribute a decorative element and soften the natural light.



20. State Office Building

- Website: <http://dlnr.hawaii.gov/dsp/parks/oahu/royal-mausoleum-state-monument/>
- The State Office Building in downtown Hilo was constructed in 1966. In 1969, the county courts moved from the old Police Station and Courthouse to the State Office Building and shared quarters until the current courthouse was completed across the street in 2009. The State Office Building at 75 Aupuni Street houses offices of the State Departments of Accounting and General

Services, Agriculture, Education, Health, Labor and Industrial Relations, Land and Natural Resources, and Taxation. The new Judiciary Complex, Hale Kaulike, was dedicated in 2009 and houses the Third Circuit Courts.



21. Wailoa Visitors Center

- Website: <https://www.wailoacenter.com/>
- Wailoa Center is located within the Wailoa River State Recreation Area in Hilo and is a Division of State Parks, Department of Land and Natural Resources. Wailoa Center is Hawai'i Islands' largest venue for showcasing the work of local artists, community groups and cultural events. An exciting variety of month-long exhibits and events are scheduled throughout the year which can be viewed in the circular building's two galleries. Visitors can also receive information about art and cultural resources, local attractions, and events on the Big Island from the Center's knowledgeable staff and volunteers. Wailoa Center is free and open to the public. Wailoa Center works closely with Hawai'i Island Art Alliance (HIAA), a non-profit organization who serve as "Friends of Wailoa Center". HIAA sponsors regular juried exhibits at the Center and they offer a variety of workshops and classes



22. Vietnam Memorial

- Website: <http://dlnr.hawaii.gov/dsp/parks/oahu/royal-mausoleum-state-monument/>

- Dedicated on November 11, 1988, this black marble memorial with an eternal flame is located in a grove of 50 palm trees each of which has a dedication plaque containing the name of one of the 50 men and women of Hawaii County who lost their lives in the Vietnam War.



23. Statue of King Kamehameha the Great

- Website: [https://www.hvcb.org/listing/king-kamehameha-statue-\(hilo\)/109425/](https://www.hvcb.org/listing/king-kamehameha-statue-(hilo)/109425/)
- Today, Hilo is the seat of government of the County of Hawai'i, which encompasses the entire island. During the reign of King Kamehameha, Hilo served as his first official capitol after unifying the Hawaiian Islands. It's also where he built and housed his fleet of war canoes, the wa'a peleleu. Hilo was a special place for the King, so this statue's presence is fitting. The 14-foot statue was sculpted at the Fracaro Foundry in Vicenza, Italy, in 1963, but was not erected on this site and dedicated until June 1997. The statue was originally commissioned by the Princeville Corporation for its resort on the island of Kaua'i. However, the people of Kaua'i opposed the statue's placement there, as Kaua'i was never physically conquered by King Kamehameha I, rather via treaty only. As Hilo was one of the King's political centers, the Princeville Corporation gifted the statue to the island of Hawai'i via the Kamehameha Schools Alumni Association, East Hawai'i Chapter. It is said that one of Kamehameha's favorite dishes was the 'ono, or delicious mullet, fished in the Wailoa fishpond, the backdrop to this very statue.



24. Waiakea Settlement Clock

- Website: <https://www.hmdb.org/m.asp?m=110924>

- The Waiakea Social Settlement clock was refurbished and re-erected on this original concrete stand by the Waiakea Pirates Athletic Club in May, 1984. It is one of the few landmarks that withstood the destruction on Waiakea Town by the tsunami of May 23, 1960. The clock stopped at 1:05 a.m. Mrs Martha E.R. Wakefield, principal of Waiakea Elementary School, which adjoined the Settlement building, donated this in memory of her sister, Mrs C.E Richardson, in 1939. Today it serves as a symbol of the strength, courage and resilience of the residents of Waiakea, also known as Yashijima.



25. Banyan Drive

- Website: <https://keolamagazine.com/sustainability/hilos-history-through-the-banyan-trees/>
- During the 1930s, a virtual who's who of celebrities, sports stars, and politicians including our nation's 32nd president all made their way to Hilo. While here, many participated in planting a banyan tree on the Waiākea Peninsula. The result is one of the crown jewels of Hilo: 50 majestic trees gracefully lining Banyan Drive, providing a magnificent canopy of shade for those who stroll or drive along this scenic route.

"The trees are a window into the history of Hilo," says writer and forensic anthropologist Jane Lasswell Hoff. The Hilo resident is more than an avid history buff. She literally wrote the book on the trees' history, *The Trees of Banyan Drive*. The guidebook is a handy reference, because even though the trees have markers in front of them, many of the brown wooden signs are rotted or missing. The banyan tree associated with the Historic Hawai'i Trail is located at Reeds Bay Beach Park.



Questionnaire for Hilo Participants

Name: _____

1. HAWAII COUNTY POLICE DEPARTMENT is located on Kapiolani Street. The Chief of Police's office is located on the _____ floor.
2. The VETERAN'S CEMETERY is located off Kapiolani Street. Veterans of the _____ World War, _____ World War, _____ War, and _____ War who made the supreme sacrifice for our Country are buried in these hallowed grounds.
3. The HAILI _____ CHURCH was described as "one of the finest churches in the islands" in 1857 when the cornerstone was laid for the fifth church and the fifth site. The original church was built in 1824 by Hilo Iron Works.
4. The _____ was dedicated in 1919 and was the third church and the second site of the Catholic Mission in Hilo.
5. The original MISSION HOUSE was built by Missionaries, _____, in 1939. The modern Lyman House Museum was built in 1973. The mineral and rock collection here is rated one of the top ten in the country.
6. The HILO UNITED METHODIST CHURCH first began its missionary work in _____ Plantation in 1910. The present church building was dedicated in 1964.
7. The HAWAII STATE LIBRARY has two large boulders on the front lawn. The large horizontal one or called the _____ which legend says, was used to sever the umbilical cords of royal children and in testing the claims of royal blood in new born males. _____ is said to have lifted the stone as a young man to prove his claim to the throne. The stone is estimated to weigh 3-1/2 tons. The smaller upright is said to be the entrance pillar of the Panao Temple on this island.
8. The FEDERAL BUILDING houses the _____ and various federal agencies. Palm trees along the makai side of the building are to commemorate Hawai'i citizens who died in World War I.
9. Across Hilo Armory on SHIPMAN STREET was a saloon. The word "SALOON" is embedded in the sidewalk, a remnant of the day. It marked the entrance to the largest and only saloon in Hilo, covering the distance from Waianuenue Avenue to Shipman Street. On the curb there is a round ring. What was that ring used for? _____
10. The construction of the BREAKWATER began in 1908. Approximately _____ tons of rock quarried on this island were used to build this barrier.
11. The PACIFIC TSUNAMI MUSEUM is in the First Hawaiian Bank (formerly Bishop National Bank). The building has withstood major tsunamis since it was built in _____. There is a quilt in the museum made by the students of _____ and community members. This is a tribute to the children and teachers who died in April 1, 1946 tsunami that struck Laupahoehoe Point.
12. KALAKAUA PARK is named after King David Kalakaua who was also known as the _____. There is a monument on the makai side of the park for the Second World War, Korean, and Vietnam Conflict veterans.

- 13.** The S.H. KRESS BUILDING was constructed in 1932. This was Hilo's introduction to a new style of architecture, Art Deco, featuring a terra cotta façade and terrazzo flooring. Kress was the most popular _____ and _____ store before closing its doors in 1980.
- 14.** The PALACE THEATER was built in 1925. It was owned by Adam Baker, son of the last _____ of the island of Hawai'i.
- 15.** MO'OHEAU PARK is named for Chief Kaaiawa i Mooheau, the son of Kahinu Hoolulu and George Beckley who gave the land to the Territory of Hawai'i in the 1920s. Many community and athletic events are held there. Today, the park is maintained by the _____.
- 16.** The HAWAII TRIBUNE HERALD has been printing newspapers since 1923 and today publishes _____ days a week.
- 17.** The HILO CENTRAL FIRE STATION was built in _____. This is the only station on the island that has the brass sliding poles.
- 18.** HILO HONGWANJI MISSION embraces the _____ religion.
- 19.** COUNTY OF HAWAII OFFICE BUILDING was dedicated in 19657. The structure reflects Hawaiiana in its design. A _____ (Hawaiian salt evaporating rock) is located on the central ground floor.
- 20.** Offices of the _____ are located in the STATE BUILDING. The District and Third Circuit Courts are also in this building
- 21.** The WAILOA VISITORS CENTER is located on the banks of the _____ River and is run by the State and provides _____ display.
- 22.** The VIETNAM MEMORIAL pays tribute to the men of Hawai'i County who lost their lives in the Vietnam War. It was dedicated on _____ with each name engraved on granite. The memorial has an eternal _____.
- 23.** The statue of King Kamehameha the Great was donated by the Princeville Corporation on Kaua'i. The people of Kaua'i did not want the statue on Kaua'i because _____ did not conquer the island of Kaua'i.
- 24.** On May 23, 1960 a tsunami hit Hilo. Sixty-one people lost their lives and all the business of Waiakea Town were completely destroyed. The lone reminder of the community in the WAIAKEA SETTLEMENT CLOCK which stopped at _____ a.m.
- 25.** On Banyan Drive, banyan trees were planted by local, state and national celebrities or in honor of some momentous event. The first trees were planted on October 23, 1833 by a group of movie actors, including Cecil B. DeMille, and wife. Two days later, George Herman (Babe) Ruth planted a tree across Hilo Hawaiian Hotel. The first Chief Scout Executive, Boy Scouts of America, _____ planted a tree on March 9, 1938. A 50th Anniversary tree rededication ceremony was held on February 22, 1998 with Chief Scout Executive, Jere B. Ratcliffe

Answers to Hilo Historic Trail Questionnaire

1. Upper (or Second) Floor
2. First (I) World War, Second (II) World War, Korean War, and Vietnam War
3. Haili Congregational Church
4. St. Joseph Catholic Church
5. David Belden Lyman and Sarah Joiner Lyman
6. 'Ōla'a Sugar Plantation (*answer cannot be found anywhere on the property*)
7. Naha Stone; King Kamehameha.
8. United States Post Office
9. Tying up horses (*answer cannot be found anywhere*)
10. 950,000
11. 1930 (*the date is located on a plaque at the main entrance to the building*); Laupahoehoe Elementary and High School
12. Merrie Monarch (*answer cannot be found anywhere*)
13. Five; Dime
14. Royal Governors
15. County of Hawai'i, Department of Parks and Recreation
16. Seven (7)
17. 1939 (*answer is on a plaque on the corner of the station*).
18. Shin Buddhism
19. Kahekaheka or Poho Kahapa'akai (*The County Building is only open during weekdays*)
20. State of Hawai'i (*The State Building is only open during weekdays*)
21. Wailoa; Art
22. November 11, 1988; Flame
23. King Kamehameha
24. 1:05 a.m.
25. James E. West

NA MOKUPUNI O LAWELAWE LODGE 567 HERITAGE TRAIL REPORT FORM

DIRECTIONS – Please fill out the information below completely and accurately. Heritage Trail patches are available for purchase at the Scout Service Center for all those who completed the hike. Patches are sold at \$3.50 each. Submit this form when purchasing the patches.

PACK / TROOP / POST / TEAM / OR OTHER AGENCY (Name of Group) _____

Date of hike _____ Leader _____ Phone _____

The following hiked the trail:

1.		16.
2.		17.
3.		18.
4.		19.
5.		20.
6.		21.
7.		22.
8.		23.
9.		24.
10.		25.
11.		26.
12.		27. ADULT:
13.		28. ADULT:
14.		29. ADULT:
15.		30. ADULT:

(For office use)

PATCHES (\$3.50 each)

TOTAL MONEY PAID _____

RECEIVED BY _____
